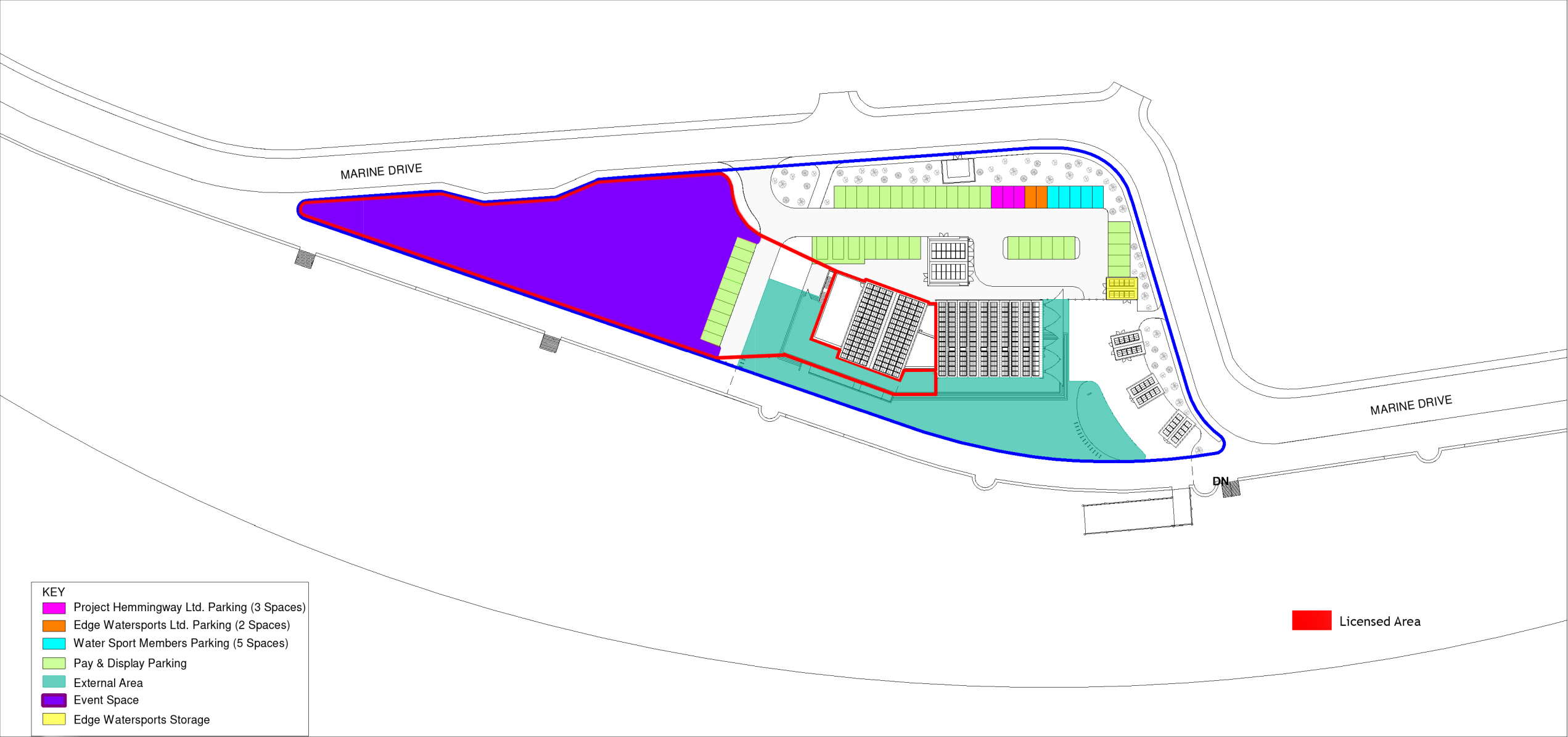
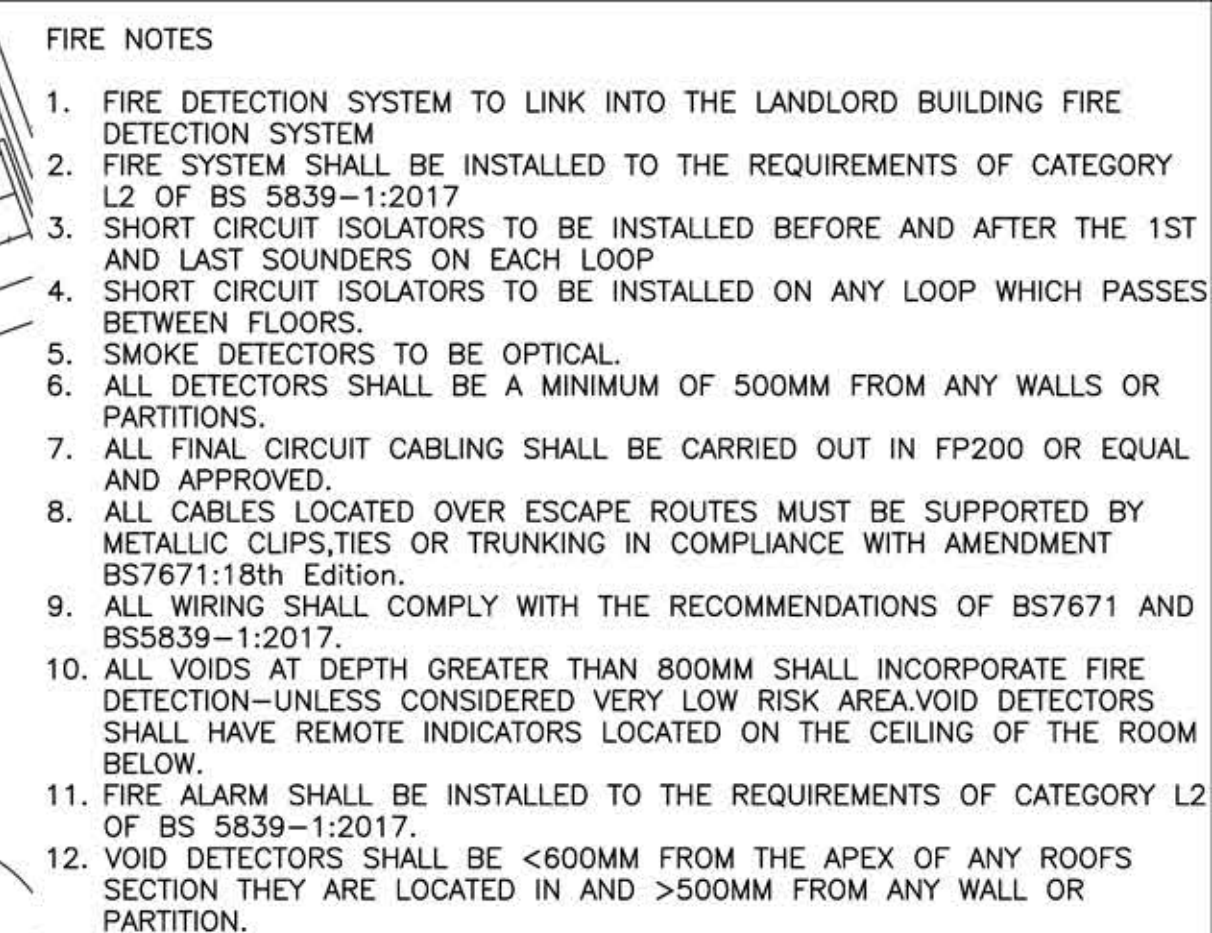


APPENDIX B



1 Site - Lease Plan A - Project Hemmingway Ltd  
1 : 1000





1. ALL FINAL INTERNAL CIRCUIT CABLING SHALL BE CARRIED OUT IN STRANDED COPPER CONDUCTORS 6261B/6243B/6243B (LSF) CABLES.
2. ALL CABLES LOCATED OVER ESCAPE ROUTES MUST BE SUPPORTED METALLIC CLIPS, TIES OR TRUNKING IN COMPLIANCE WITH AMENDMENT BS7671:18TH EDITION.
3. ALL LIGHTING TO BE AGREED WITH BY THE INTERIOR DESIGNER BEFORE ORDERING.
4. ALL EMERGENCY LIGHTING IS TO BE SUPPLIED VIA THE LIGHTING CIRCUIT LOCAL TO ITS POINT OF INSTALLATION
5. ALL FINAL CIRCUITS SHALL BE PROTECTED BY 30mA RCD.
6. ALL LIGHTING SWITCHES SHALL BE INSTALLED AT 1200MM F.F.L TO THE TOP SWITCH.
7. PROVISION OF HOUSE LIGHTING SHALL BE LUTRON CONTROLLED AND SUPPLIED FROM THE AV RACK LOCATION LUTRON SYSTEM SUPPLIED AND COMMISSIONED BY INTELLIGENT ABOVE.

## SCHEDULE OF REVISIONS

## SCHEDULE OF MODELS

Standard Construction Hazards that a competent contractor would be aware of during normal working practises are not identified. Risks that may not be immediately apparent are listed on Design Hazard Reduction Checklist.

COPYRIGHT ©: THIS DRAWING REMAINS THE PROPERTY OF EDP ENVIRONMENTAL CONSULTANTS & CONSULTANTS. MUST CHECK ALL DIMENSIONS ON SITE. ONLY FIGURED DIMENSIONS ARE TO BE USED. ANY DISCREPANCIES ARE TO BE REPORTED TO THE ARCHITECT BEFORE WORK PROCEEDS. THIS DRAWING SHALL BE USED ONLY FOR THE PURPOSE INTENDED. NOTES: DO NOT SCALE FROM THIS DRAWING. IF IN DOUBT, ASK. THIS DRAWING SHALL BE READ IN CONJUNCTION WITH ALL RELEVANT DRAWINGS, DOCUMENTS AND INFORMATION PREPARED BY THE ARCHITECT, OTHER CONSULTANTS AND SPECIALISTS. THIS DRAWING SHALL BE READ IN CONJUNCTION WITH EDP ENVIRONMENTAL MECHANICAL & ELECTRICAL SERVICES SPECIFICATION & TECHNICAL SCHEDULES.

Drawing Issue Status								
----------------------	--	--	--	--	--	--	--	--

	Drawing Title
--	---------------

### GROUND FLOOR FIRE & EMERGENCY LIGHTING LAYOUT

Project  
**SIDESHORE  
EXMOUTH**

Client	MICHAEL CAINES LTD
--------	--------------------






Int Project Ref: 2351

A1 Scale	Designed by	Drawn by	Checked by	Revision
1:50	LS	LS	MF	P01

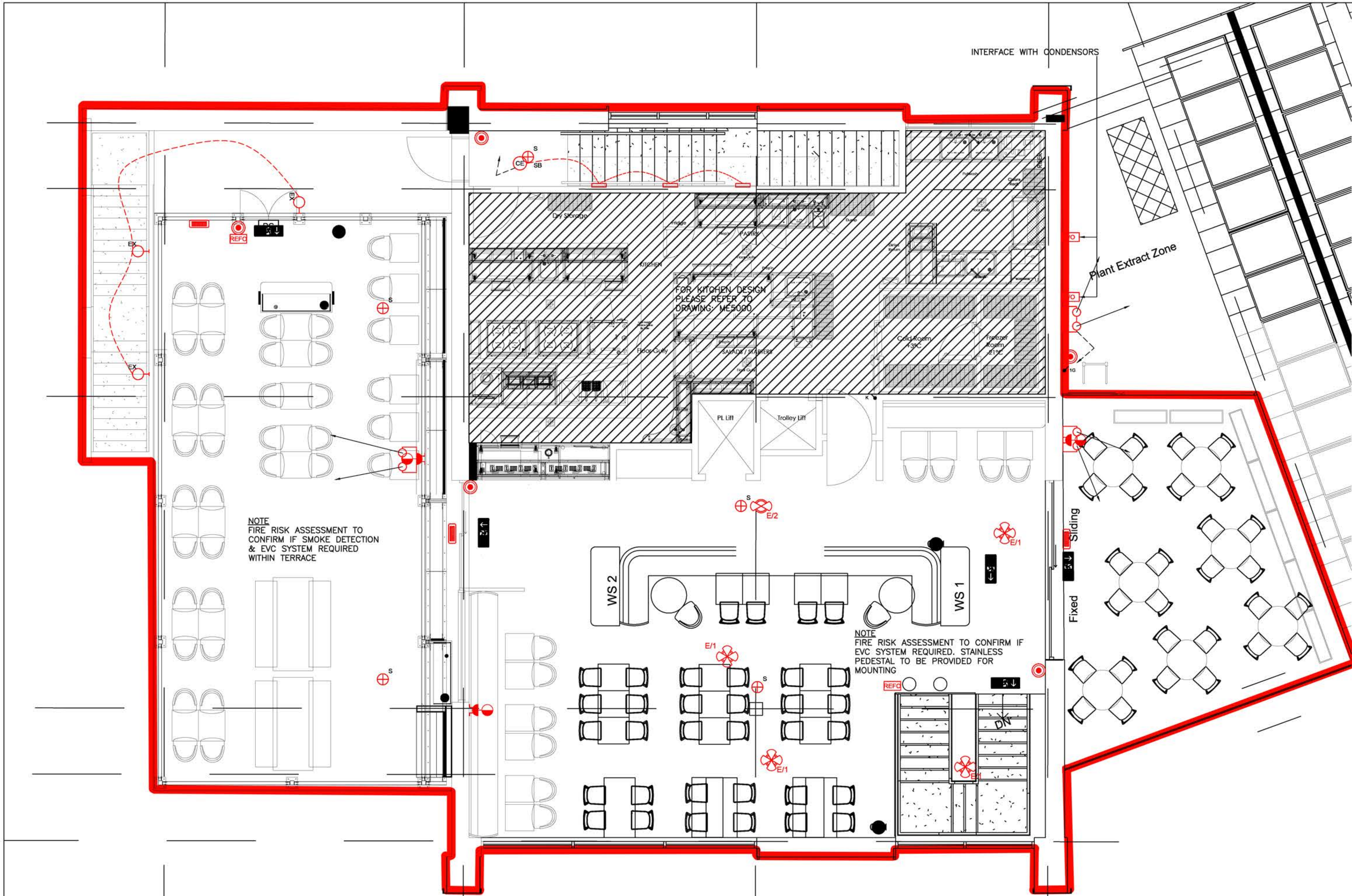
Drawing Number

2351-EDP-ZZ-GF-DR-E-4001

- |    |  |
|----|--|
| GE | Manufacturer Luceco  |
|    | ECL12021L40 Eco Climate Array 1200mm 21W   |
|    | SURFACE MOUNTED  |
|    | Length:71 mm, Width:1280 mm, Height: 75 mm<br>Tot. system power: 21 W<br>Total luminous flux: 2100 lm<br>Emergency: 400 lm |
| BE | Manufacturer Luceco  |
|    | E66L28N Eco Luxpanel 600x600 33W 4800K Emergency IP65  |
|    | Length: 595 mm, Width: 595 mm, Height: 0.0 mm  |
|    | Tot. system power:33 W<br>Total luminous flux:2800 lm<br>Luminous flux for emergency lighting: 340 lm (12.1%)              |
| CE | Manufacturer Luceco  |
|    | LBSR33W20540Sierra Bulkhead IP54 2000LM 24W Standard   |
|    | Diameter: 330 mm Height: 79 mm   |
|    | Tot. system power: 24 W<br>Total luminous flux: 2000 lm<br>Luminous flux for emergency lighting: 175 lm (8.8%)             |

- 
**Manufacturer** Kingstinger Lighting Ltd  
 20w LED Quarto bulkhead with cycle path optic  
 LED Quarto  
 Length: 100 mm, Width: 100 mm, Height: 1 mm  
 Tot. system power: 20 W  
 Total luminous flux: 1670 lm  
 Luminous flux for emergency lighting: 334 lm (20.0%)
- 
**Manufacturer** ANSELL  
 AMELED/OA/3NM/STEscape luminaires  
 EMERGENCY – Merlin LED Emergency Downlight – White  
 Diameter: 85 mm Height: 2 mm  
 Total luminous flux: 268 lm  
 Luminous flux for emergency lighting: 268 lm (100.0%)  
 LED 5W Non-Maintained – Open Area – Emergency
- 
**Manufacturer** ANSELL  
 AMELED/ER/3NM/ST Escape luminaires  
 EMERGENCY – Merlin LED Emergency Downlight – White  
 Diameter: 85 mm Height: 2 mm  
 Total luminous flux: 247 lm





Licenced Area

FIRE NOTES

1. FIRE DETECTION SYSTEM TO LINK INTO THE LANDLORD BUILDING FIRE DETECTION SYSTEM
2. FIRE SYSTEM SHALL BE INSTALLED TO THE REQUIREMENTS OF CATEGORY L2 OF BS 5839-1:2017
3. SHORT CIRCUIT ISOLATORS TO BE INSTALLED BEFORE AND AFTER THE 1ST AND LAST SOUNDERS ON EACH LOOP
4. SHORT CIRCUIT ISOLATORS TO BE INSTALLED ON ANY LOOP WHICH PASSES BETWEEN FLOORS.
5. SMOKE DETECTORS TO BE OPTICAL.
6. ALL DETECTORS SHALL BE A MINIMUM OF 500MM FROM ANY WALLS OR PARTITIONS.
7. ALL FINAL CIRCUIT CABLING SHALL BE CARRIED OUT IN FP200 OR EQUAL AND APPROVED.
8. ALL CABLES LOCATED OVER ESCAPE ROUTES MUST BE SUPPORTED BY METALLIC CLIPS/TIES OR TRUNKING IN COMPLIANCE WITH AMENDMENT BS7671:18th Edition.
9. ALL WIRING SHALL COMPLY WITH THE RECOMMENDATIONS OF BS7671 AND BS5839-1:2017.
10. ALL VOIDS AT DEPTH GREATER THAN 800MM SHALL INCORPORATE FIRE DETECTION-UNLESS CONSIDERED VERY LOW RISK AREA.VOID DETECTORS SHALL HAVE REMOTE INDICATORS LOCATED ON THE CEILING OF THE ROOM BELOW.
11. FIRE ALARM SHALL BE INSTALLED TO THE REQUIREMENTS OF CATEGORY L2 OF BS 5839-1:2017.
12. VOID DETECTORS SHALL BE <600MM FROM THE APEX OF ANY ROOFS SECTION THEY ARE LOCATED IN AND >500MM FROM ANY WALL OR PARTITION.

- REFC Refuge alarm out-station type B
- FAP Open Protocol Addressable Fire Alarm Panel. 24Hr battery back-up and ARC facility
- Manual Call Points
- H Heat detector
- H SB Heat detector with Sounder Base
- S Smoke detector
- S SB Smoke detector with Sounder Base
- VAD with Sounder Base
- VAD
- WO INPUT/OUTPUT Fire Alarm Interface Relay
- DC Security Door Contact
- KP Security Key Pad

FIRE NOTES

1. FIRE DETECTION SYSTEM TO LINK INTO THE LANDLORD BUILDING FIRE DETECTION SYSTEM
2. FIRE SYSTEM SHALL BE INSTALLED TO THE REQUIREMENTS OF CATEGORY L2 OF BS 5839-1:2017
3. SHORT CIRCUIT ISOLATORS TO BE INSTALLED BEFORE AND AFTER THE 1ST AND LAST SOUNDERS ON EACH LOOP
4. SHORT CIRCUIT ISOLATORS TO BE INSTALLED ON ANY LOOP WHICH PASSES BETWEEN FLOORS.
5. SMOKE DETECTORS TO BE OPTICAL.
6. ALL DETECTORS SHALL BE A MINIMUM OF 500MM FROM ANY WALLS OR PARTITIONS.
7. ALL FINAL CIRCUIT CABLING SHALL BE CARRIED OUT IN FP200 OR EQUAL AND APPROVED.
8. ALL CABLES LOCATED OVER ESCAPE ROUTES MUST BE SUPPORTED BY METALLIC CLIPS/TIES OR TRUNKING IN COMPLIANCE WITH AMENDMENT BS7671:18th Edition.
9. ALL WIRING SHALL COMPLY WITH THE RECOMMENDATIONS OF BS7671 AND BS5839-1:2017.
10. ALL VOIDS AT DEPTH GREATER THAN 800MM SHALL INCORPORATE FIRE DETECTION-UNLESS CONSIDERED VERY LOW RISK AREA.VOID DETECTORS SHALL HAVE REMOTE INDICATORS LOCATED ON THE CEILING OF THE ROOM BELOW.
11. FIRE ALARM SHALL BE INSTALLED TO THE REQUIREMENTS OF CATEGORY L2 OF BS 5839-1:2017.
12. VOID DETECTORS SHALL BE <600MM FROM THE APEX OF ANY ROOFS SECTION THEY ARE LOCATED IN AND >500MM FROM ANY WALL OR PARTITION.

- Manufacturer Luceco  
LBSR33W20S40Sierra Bulkhead IP54 2000LM 24W Standard  
Diameter: 330 mm Height: 79 mm  
Tot. system power: 24 W  
Total luminous flux: 2000 lm  
Luminous flux for emergency lighting: 175 lm (8.8%)
- Manufacturer Kingfisher Lighting Ltd  
20w LED Quarto bulkhead with cycle path optic  
LED Quarto  
Length: 100 mm, Width: 100 mm, Height: 1 mm  
Tot. system power: 20 W  
Total luminous flux: 1670 lm  
Luminous flux for emergency lighting: 334 lm (20.0%)
- Manufacturer ANSELL  
AMELED/OA/3NM/STEscape luminaires  
EMERGENCY - Merlin LED Emergency Downlight - White  
Diameter: 85 mm Height: 2 mm  
Total luminous flux: 268 lm  
Luminous flux for emergency lighting: 268 lm (100.0%)  
LED 5W Non-Maintained - Open Area - Emergency
- Manufacturer ANSELL  
AMELED/ER/3NM/ST Escape luminaires  
EMERGENCY - Merlin LED Emergency Downlight - White  
Diameter: 85 mm Height: 2 mm  
Total luminous flux: 247 lm  
Luminous flux for emergency lighting: 247 lm (100.0%)  
LED 5W Non-Maintained - Escape Route - Emergency
- Wall or ceiling mounted 3hr maintained self illuminating exit sign box.
- IP65 Rated Emergency Bulkhead
- Emergency Lighting Key Switch

P01 SUITABLE FOR CONTRACT		LS	23.01.20	PB
Mark	Revision	Drawn	Date	Chkd

### SCHEDULE OF REVISIONS

Model Name	[Model Number] - [Revision] - [Date Received]
Architects Model:	
Structural Model:	
Furniture, Fixtures, and Equipment (FFE) Model:	

### SCHEDULE OF MODELS

### HEALTH AND SAFETY NOTES

Standard Construction Hazards that a competent contractor would be aware of during normal working practises are not identified. Risks that may not be immediately apparent are listed on Design Hazard Reduction Checklist.

COPYRIGHT EDP: THIS DRAWING REMAINS THE PROPERTY OF EDP ENVIRONMENTAL. CONTRACTORS & CONSULTANTS MUST CHECK ALL DIMENSIONS ON SITE. ONLY FIGURED DIMENSIONS ARE TO BE USED. ANY DISCREPANCIES ARE TO BE REPORTED TO THE ARCHITECT BEFORE WORK PROCEEDS. THIS DRAWING SHALL BE USED ONLY FOR THE PURPOSE INTENDED. NOTES: DO NOT SCALE FROM THIS DRAWING. IF IN DOUBT, ASK. THIS DRAWING SHALL BE READ IN CONJUNCTION WITH ALL RELEVANT DRAWINGS, DOCUMENTS AND INFORMATION PREPARED BY THE ARCHITECT, OTHER CONSULTANTS AND SPECIALISTS. THIS DRAWING SHALL BE READ IN CONJUNCTION WITH EDP ENVIRONMENTAL MECHANICAL & ELECTRICAL SERVICES SPECIFICATION & TECHNICAL SCHEDULES

Drawing Issue Status

## D3 SUITABLE FOR CONSTRUCTION

Drawing Title


## FIRST FLOOR FIRE & EMERGENCY LIGHTING LAYOUT

Project

## SIDESHORE EXMOUTH

Client

## MICHAEL CAINES LTD



T: 01392 367237 (South West)  
T: 01276 300280 (South East)  
T: 0207 6091899 (London)

Int Project Ref: **2351**

A1 Scale	Designed by	Drawn by	Checked by	Revision
1:50	LS	LS	MF	P01

Drawing Number

## 2351-EDP-ZZ-01-DR-E-4002